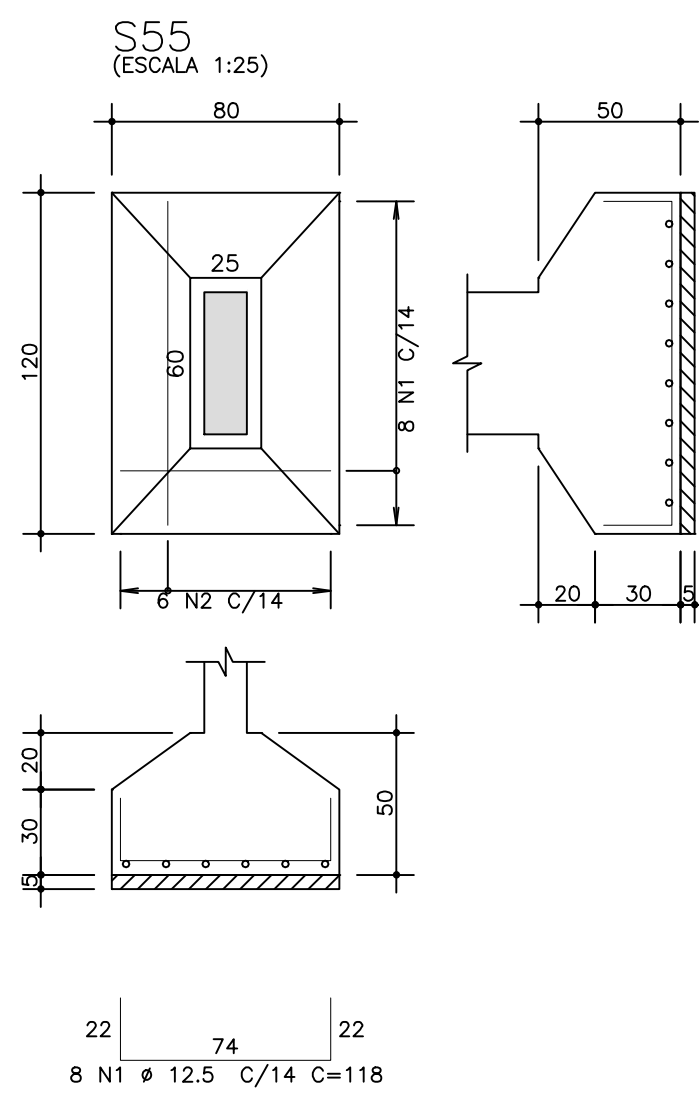
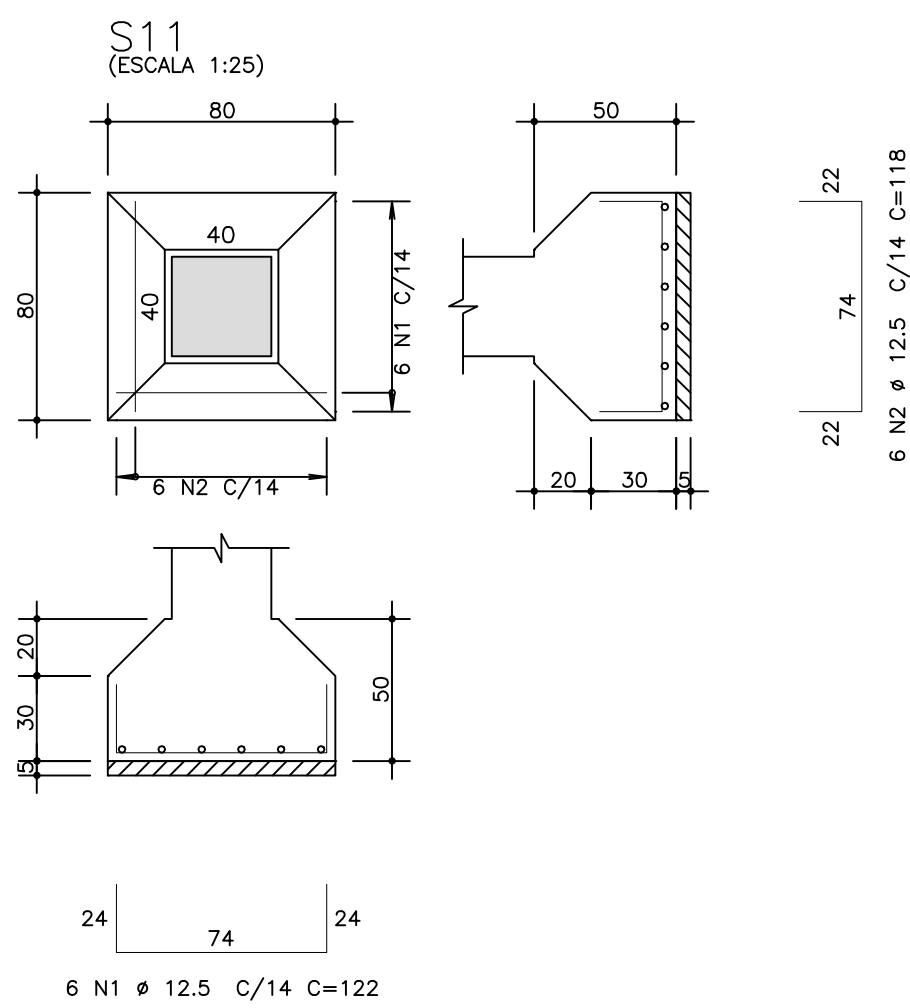
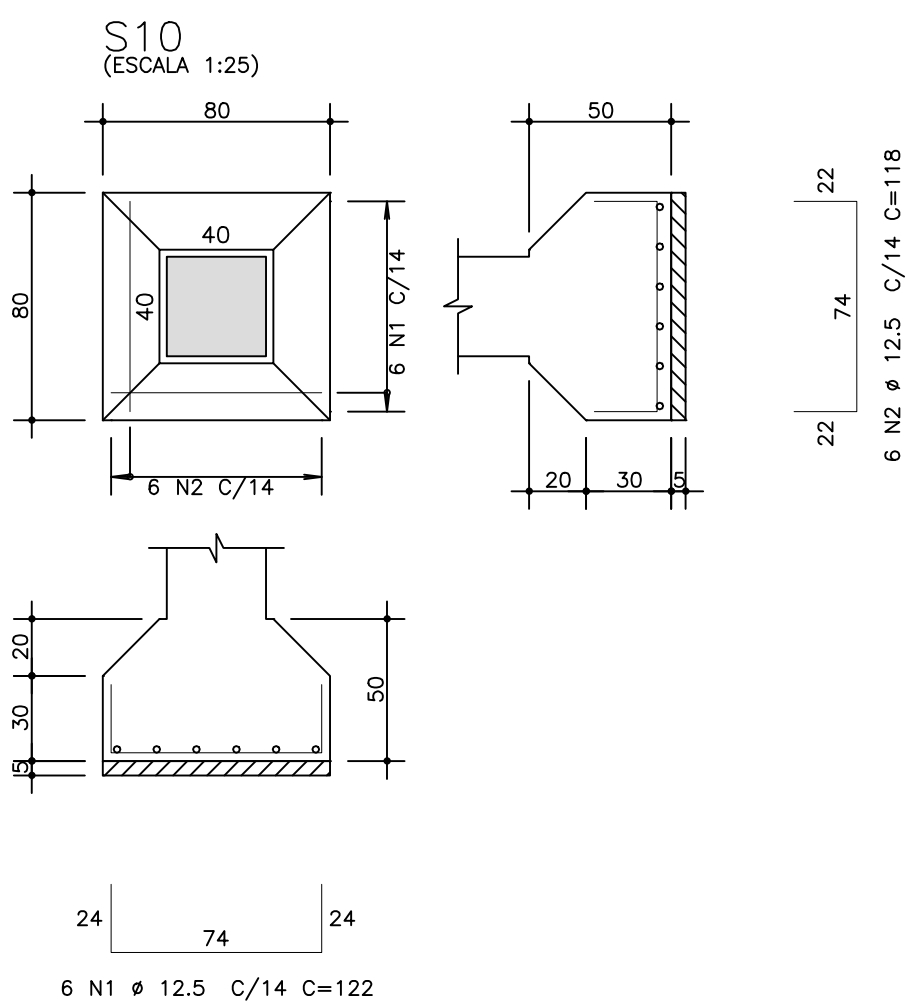
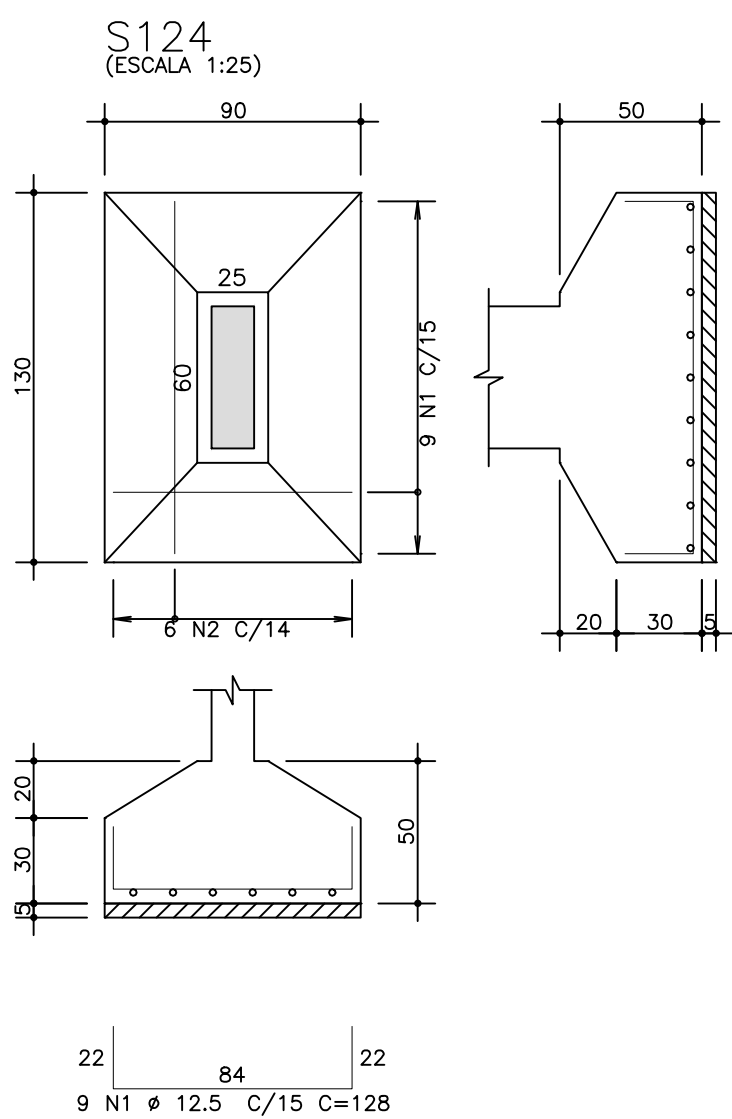
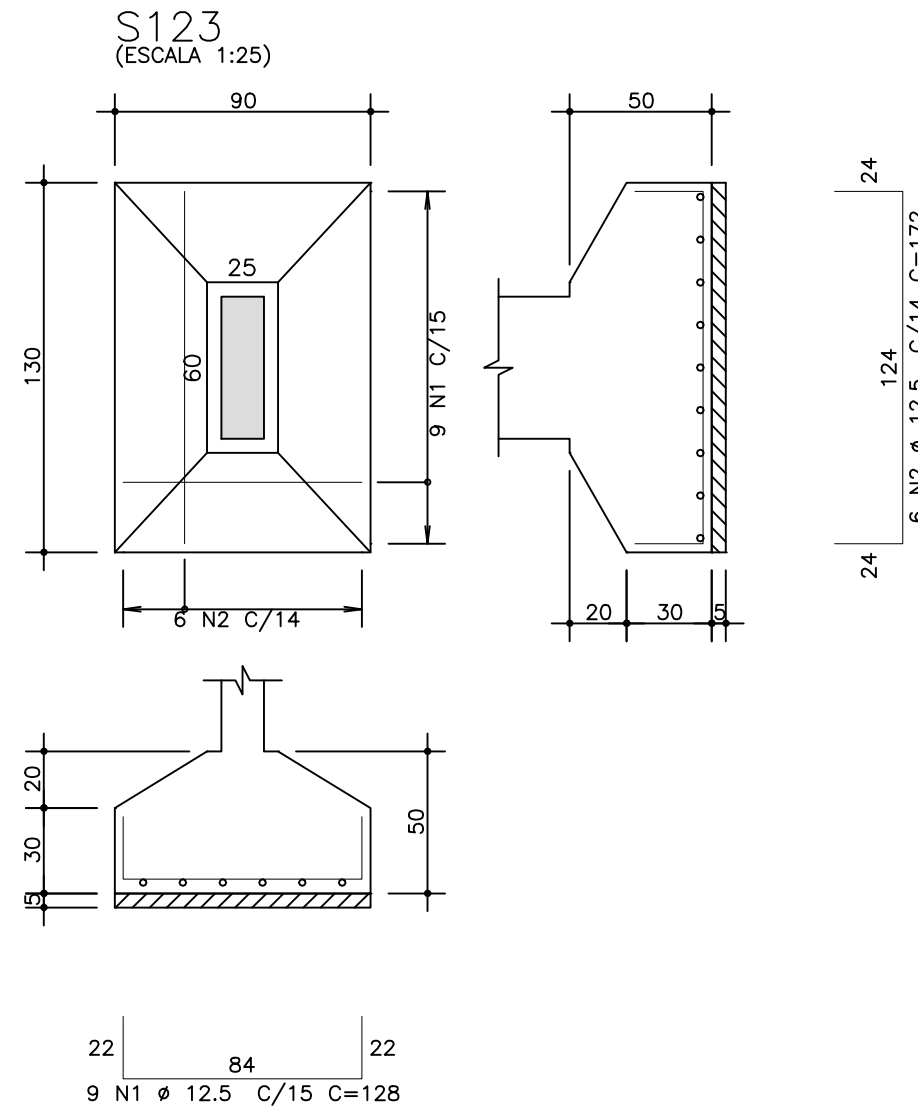
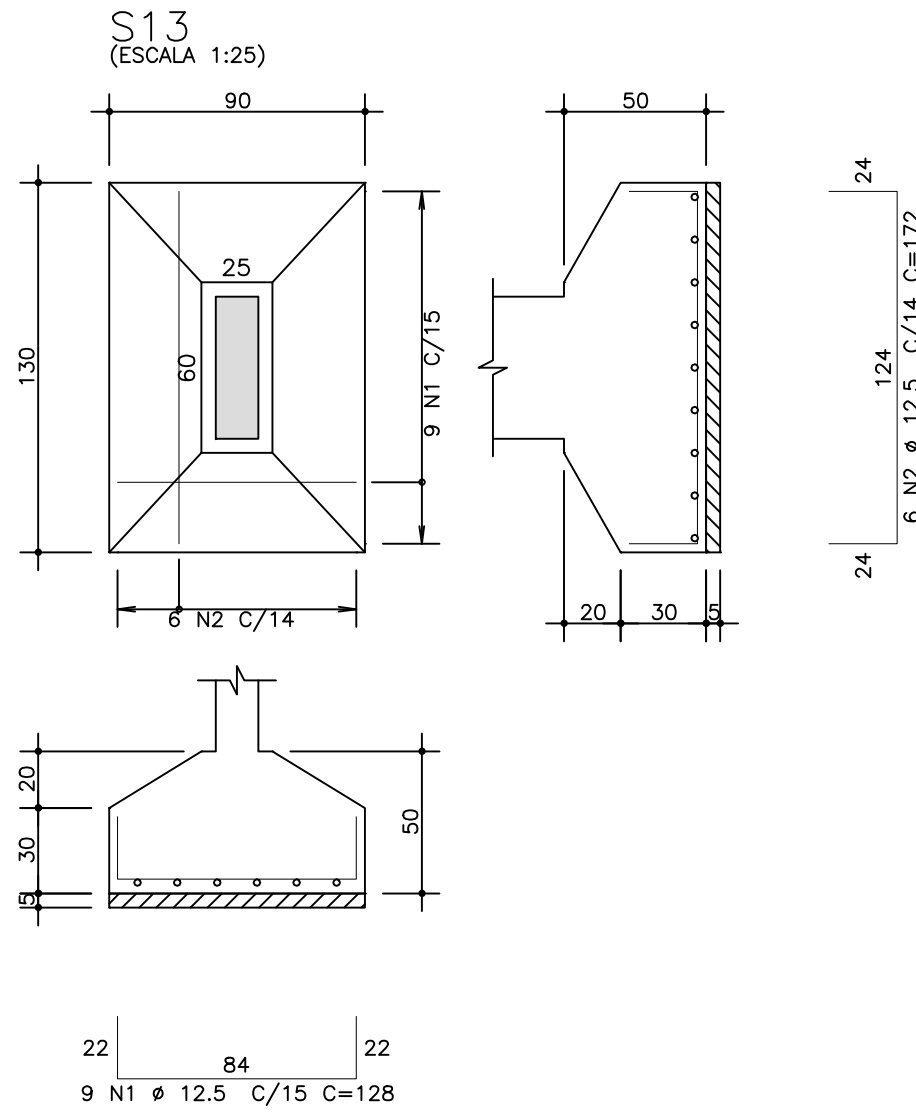
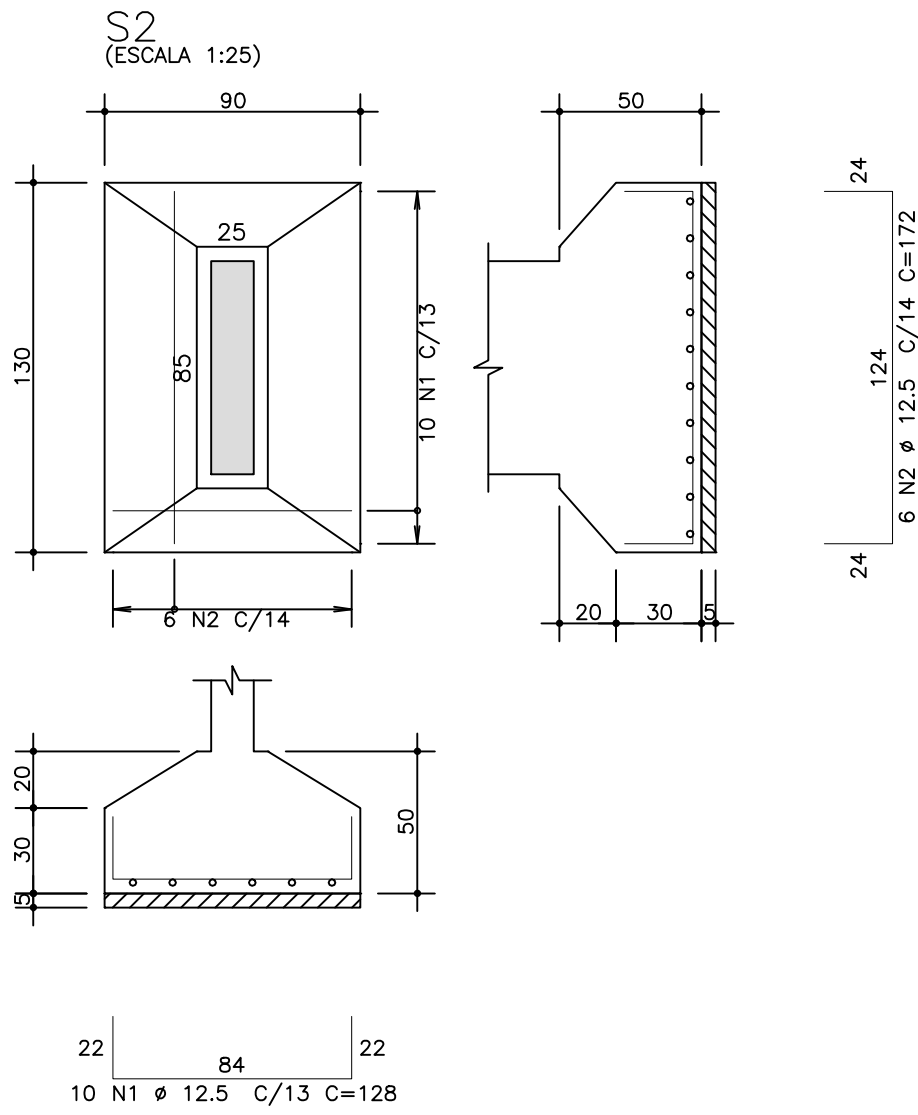
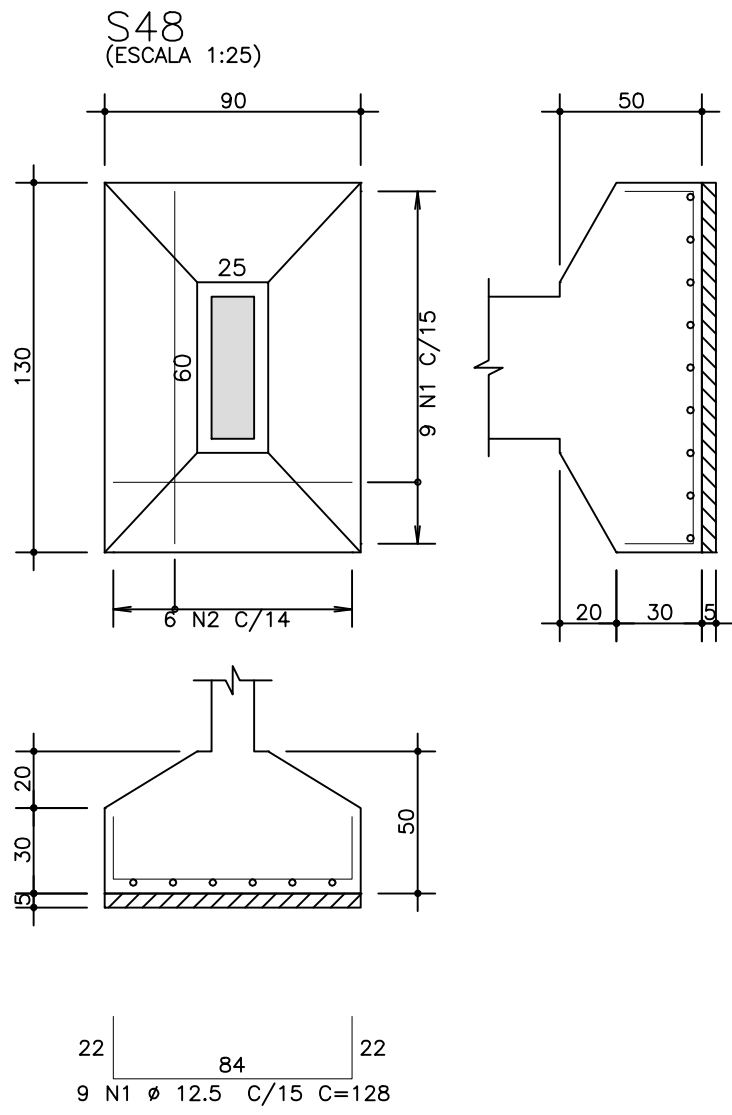


AÇO	POS	BIT (mm)	QUANT	COMPRIMENTO	
				UNIT (cm)	TOTAL (cm)
S2	50A	1	12.5	10	128
	50A	2	12.5	6	172
S10	50A	1	12.5	6	122
	50A	2	12.5	6	118
S11	50A	1	12.5	6	122
	50A	2	12.5	6	118
S13	50A	1	12.5	9	128
	50A	2	12.5	6	172
S42	50A	1	12.5	9	128
	50A	2	12.5	6	172
S43	50A	1	12.5	13	128
	50A	2	12.5	6	222
S48	50A	1	12.5	9	128
	50A	2	12.5	6	172
S55	50A	1	12.5	8	118
	50A	2	12.5	6	162
S107	50A	1	12.5	9	128
	50A	2	12.5	6	172
S110	50A	1	12.5	10	128
	50A	2	12.5	6	182
S123	50A	1	12.5	9	128
	50A	2	12.5	6	172
S124	50A	1	12.5	9	128
	50A	2	12.5	6	172

RESUMO AÇO CA 50-60			
AÇO	BIT (mm)	COMPR (m)	PESO (kg)
50A	12.5	256	246
Peso Total 50A =			246 kg



Projeto Estrutural

Projeto: PREFEITURA MUNICIPAL VARZEA GRANDE MT

Assunto: Det. Sapatas

Obra: EMEB ALINO FERREIRA MAGALHAES

End: AV. Verdão esq. c/ Rua "B" PARQUE DO LAGO - VARZEA GRANDE

Autores do Projeto: Benedito Eliseu Schuring Eng.Civil- CREA 715/D-MT

Verificação: Andre Luiz Schuring Eng.Civil- CREA 8697/D-MT

Arquivo: 250

Arquivo: 1:50

Folha No. 08